

# Economic friction torque limiter

( Simple structure, economical )

Torque up to 1650 Nm, opening 65mm


## BML



**BMOOM**  
Torque Limiter

Shanghai Bmoom Electromechanical Co.,Ltd  
上海宝牧机电设备有限公司

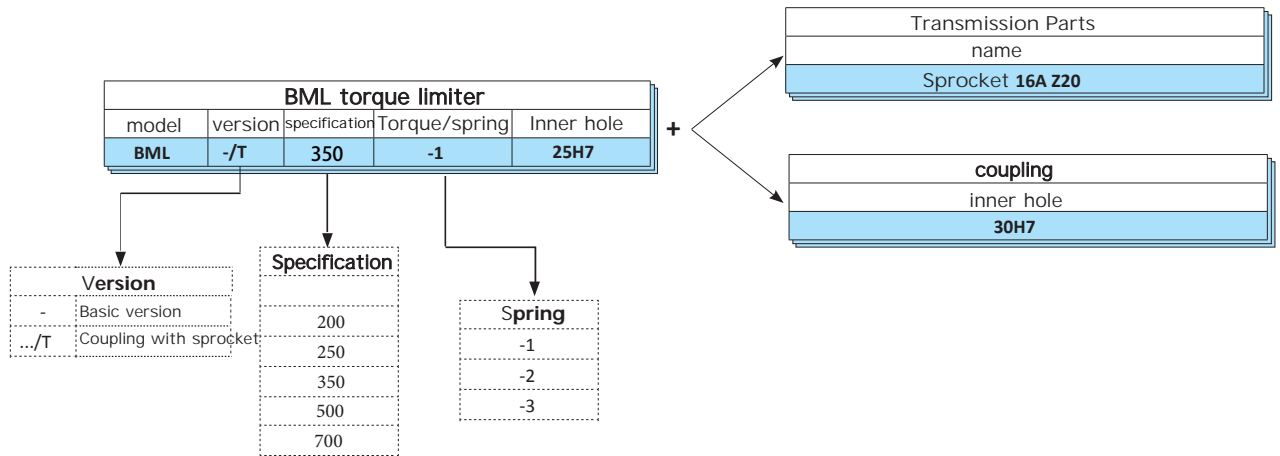
# BML-Friction Torque Limiter: Description



- Friction structure.
- The structure is simple and economical.
- Automatic reset.
- The material of the friction plate can be replaced to improve the wear resistance.
- Compared with the electronic system, the device can directly intervene, and the response ability is improved. No maintenance, long service life and high stability.
- Suitable for working in dry powder environment.
- On demand
- ▲ Equipped with a complete set of transmission gears, all turned and installed (sprockets, pulleys, gear pairs).
- For low intervention torques, coil springs can be used.
- Connect through openings and keyways or expansion sleeves.
- It can be equipped with half couplings to realize shaft-to-shaft transmission.

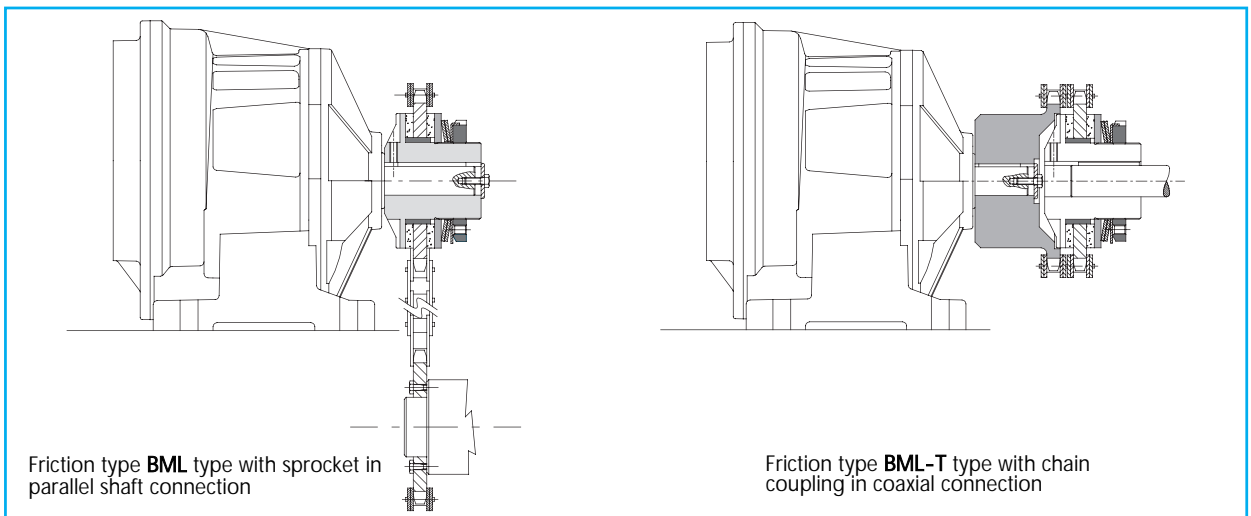
The sprocket, pulley or other transmission components in the friction torque limiter are installed between the two sliding plates. When the torque is reached, it can ensure continuous transmission without damaging the components. The characteristics of the device are: simple structure, low price, suitable for use in environments where torque accuracy is not very high.

## Order example



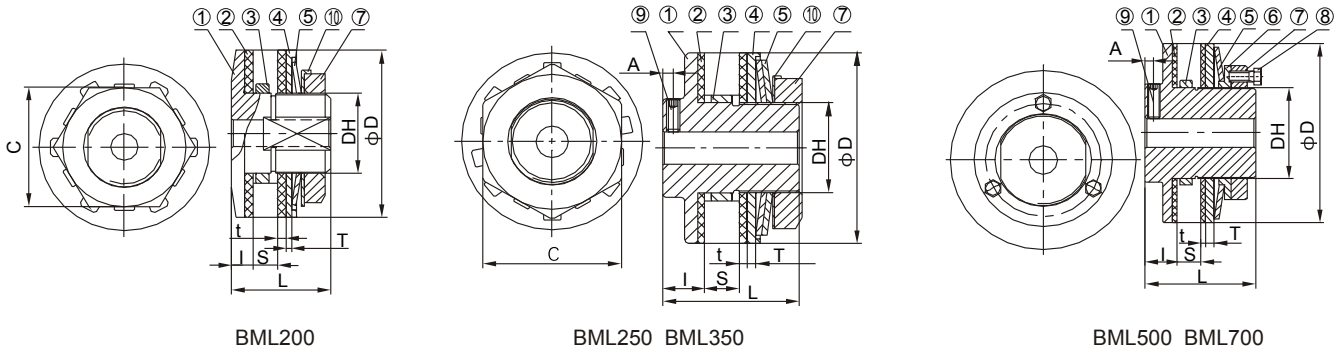
• For BML series with other coupling parameters, please contact our company

## Application example



# BML-Friction Torque Limiter: Technical Data

- ⦿ Economical friction scheme.
- ⦿ Torque adjustment is convenient, just tighten or loosen the adjustment nut. Rotation two-way protection.
- ⦿ The torque range is: 2.9-1650 Nm; the maximum opening is 64mm.



### Part Name

Main body  
Disc spring  
Locking screw

Friction plate  
Guide pressure plate  
Anti-return washer

Lining ring  
Adjusting nut

Pressure plate  
Adjusting bolt

### Technical details

model	Torque range (Nm)	Maximum speed (Rpm)	Maximum aperture	Outer diameter of lining ring (h7)	S (max)	D	DH	L	I	T	t	A	C	weight (Kg)	Adjusting bolt
BML200-1	2.9-9.8	6600	14	30	7	50	M24	29	6.5	1.6	2.5	-	36	0.26	-
BML200-2	6.9-20														
BML200-3	15-39														
BML250-1	6.9-27	6600	22	41	9	65	M35	48	16	4.0	3.2	4	50	0.74	-
BML250-2	14-54														
BML250-3	36-95														
BML350-1	20-74	5600	25	49	16	89	M42	62	19	4.0	3.2	5	65	2.48	-
BML350-2	34-149														
BML350-3	70-260														
BML500-1	47-210	2700	42	74	16	127	M65	76	22	6.0	3.2	6	-	3.85	M8*P1.0
BML500-2	88-420														
BML500-3	220-620														
BML700-1	116-569	2700	64	105	29	178	M95	98	24	7.0	3.2	6.5	-	9.44	M8*P1.0
BML700-2	223-1080														
BML700-3	760-1650														

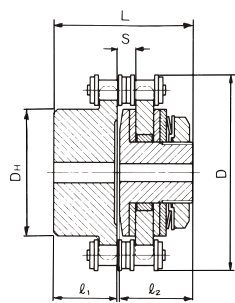
### Description

"The actual weight is related to the inner hole"

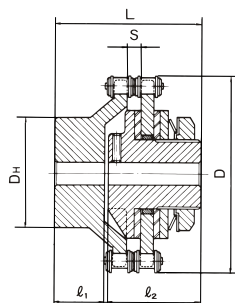
## BML-T Model with chain coupling: technical data



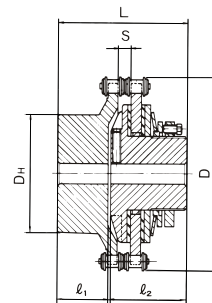
- A simple, compact solution for coaxial drives.
- Two-way rotation protection.
- There are many ways to open keyway, spline, expansion sleeve, etc.
- Torque range: 2.9-1650Nm; maximum opening: 90mm



BML-T200



BML-T250, BML-T350



BML-T500, BML-T700

### ■ Technical details

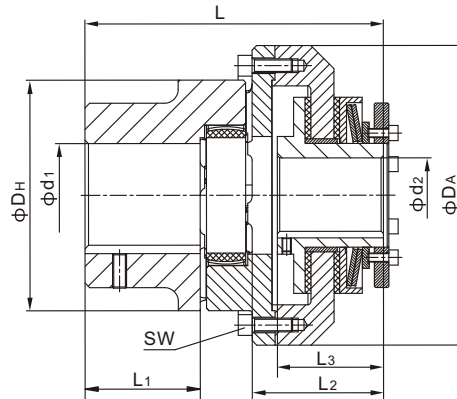
model	Torque reset (Nm)	Maximum speed (Rpm)	Maximum aperture		Sprocket	D	DH	L	l1	l2	s	weight (Kg)
			Limiter	Coupling								
BML-T200-1	2.9-9.8	1200	14	31	RS 40-16T	76	50	55	24	29	7.5	1.0
BML-T200-2	6.9-20											
BML-T200-3	15-39											
BML-T250-1	6.9-27	1000	22	38	RS 40-22T	102	56	76	25	48	7.4	1.9
BML-T250-2	14-54											
BML-T250-3	36-95											
BML-T350-1	20-74	800	25	45	RS 50-24T	137	72	103	37	62	9.7	4.2
BML-T350-2	34-149											
BML-T350-3	70-260											
BML-T500-1	47-210	500	42	65	RS 60-28T	188	105	120	40	76	11.6	10.0
BML-T500-2	88-420											
BML-T500-3	220-620											
BML-T700-1	116-569	400	64	90	RS 80-28T	251	150	168	66	98	15.3	26.0
BML-T700-2	223-1080											
BML-T700-3	760-1650											

### ■ Description

"The actual weight is related to the inner hole"

## BML-G Model with claw coupling: technical data

- Shaft-to-shaft connection.
- Can compensate for installation deviation.
- Convenient torque adjustment.
- A variety of connection methods such as keyway, spline, expansion sleeve, etc. can be provided on request.
- Torque range: 2.9-1080Nm; maximum opening: 65mm.



### Technical details

3

model	Torque reset (Nm)	Maximum speed (Rpm)	Maximum aperture		DA	DH	L	L1	L2	L3	SW
			d2	d1							
BML-G200-1	2.9-9.8	1800	14	19	70	40	77	25	36	29	6-M4
BML-G200-2	6.9-20										
BML-G250-1	6.9-27	1800	22	24	87	55	106	30	58	48	6-M5
BML-G250-2	14-54										
BML-G350-1	20-74	1800	25	28	118	65	129	35	74	62	6-M6
BML-G350-2	34-149										
BML-G500-1	47-210	1800	42	42	158	95	166	50	90	76	8-M8
BML-G500-2	88-420										
BML-G700-1	116-569	1400	64	65	216	135	225	75	115	98	8-M10
BML-G700-2	223-1080										

### Description

“The actual weight is related to the inner hole”